



# BENTONVILLE MUNICIPAL AIRPORT



## MASTER PLAN UPDATE

October 17, 2014

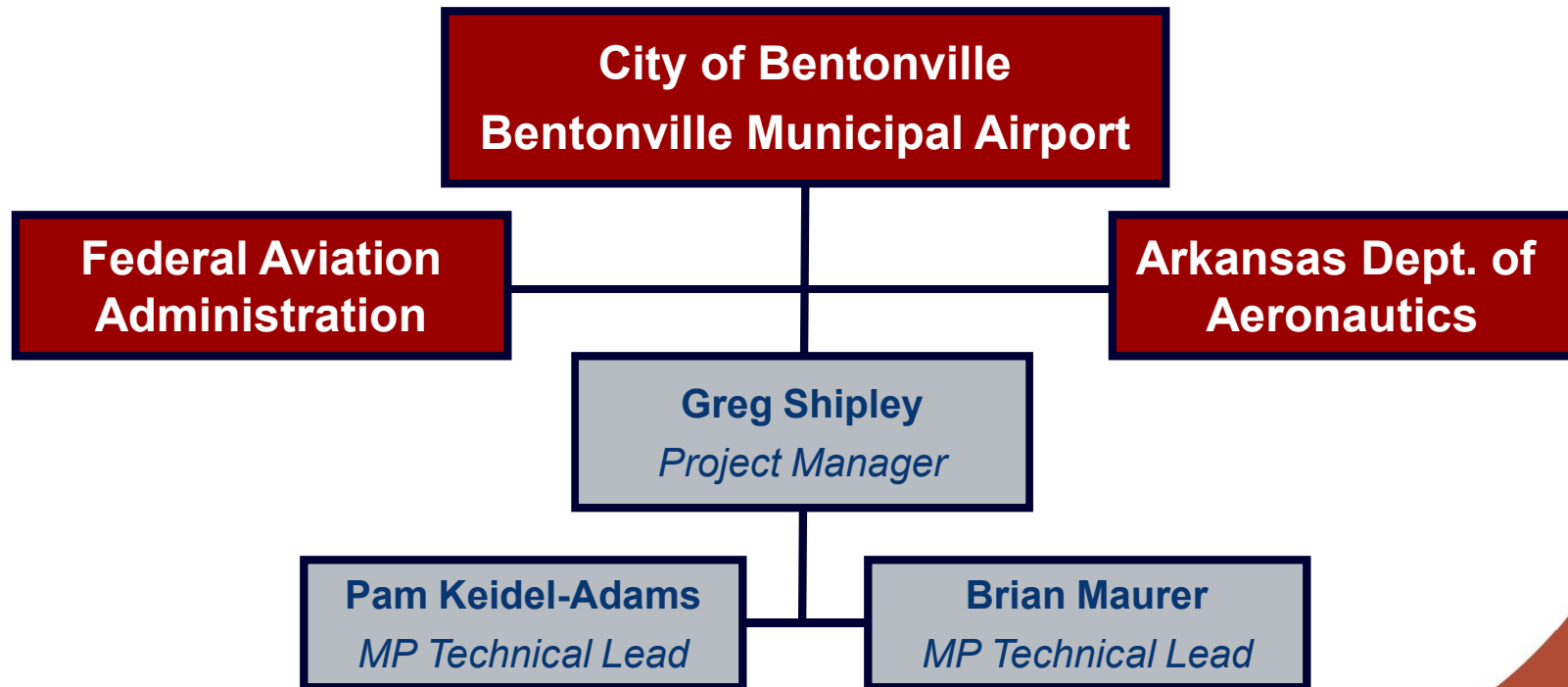
**MORRISON  
SHIPLEY** Kimley»Horn



# Agenda

- Introductions and Roles
- Airport Master Plans and Process
- Airport Overview
- Goals Discussion
- Schedule
- Next Steps

# Project Team



# Study Advisory Role

- Assist in development of long-term vision
- Provide objective evaluation and input to study process
- Review study documentation
- Participate in review meetings and discussion

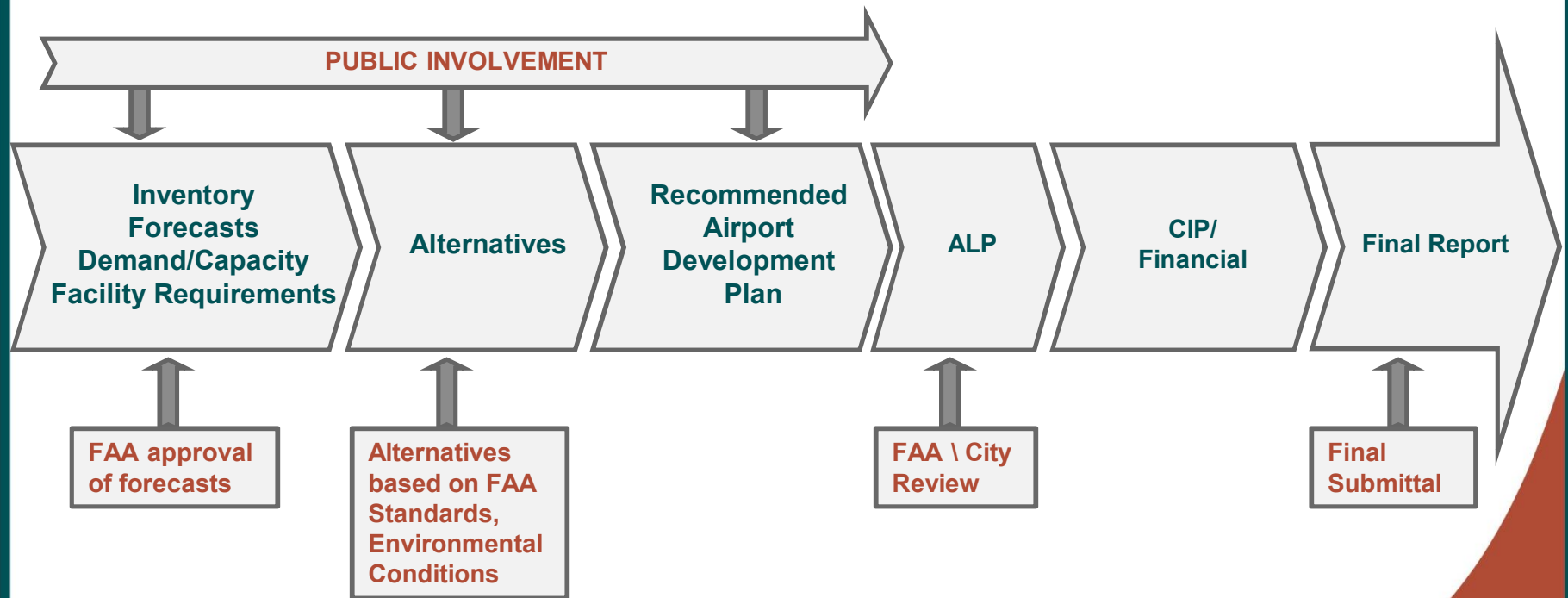
# Airport Master Plans

- Define concept for development over a 20-year planning period
- Framework to guide future airport development
  - Meet FAA and State standards
  - Cost-effective and satisfy aviation demand
  - Consider potential environmental and socioeconomic impacts

# Goals of the Master Plan

- Update conditions since 2003 Plan
- Anticipate future usage of the Airport
- Provide necessary facilities to accomplish role in the local, regional, and national transportation system
- Remain compliant with FAA and ADA guidance and regulations
- Identify environmental concerns
- Evaluate development alternatives
- Enhance safety and financial self-sufficiency of the Airport

# The Planning Process



# Airport Overview

- Classified as a General Aviation Airport
  - FAA's National Plan of Integrated Airport Systems (NPIAS)
  - FAA ASSET – Local Airport
    - Serves local/regional markets
  - Arkansas State Airport System Plan (ASASP)
    - Level 2 ASASP Airport
    - Accommodate smaller twin engine and all single-engine general aviation aircraft



# Airport Facility

- 2 miles south of the City of Bentonville
- 130 acres
- Runway 18-36      4,426' x 65'
  - Displaced 230' on RW 18 and 345' on RW 36
  - Approach visibility minimums 1 mile
- Newly constructed main terminal

# Aircraft Operational Activity

Year	Itinerant Operations				Local Operations		Total
	Air Carrier	Air Taxi	General Aviation	Military	General Aviation	Military	
2004	0	1,500	2,500	100	14,000	0	18,100
2005	0	1,500	2,500	100	14,000	0	18,100
2006	0	1,500	2,500	100	14,000	0	18,100
2007	0	1,500	2,500	100	14,000	0	18,100
2008	0	1,500	2,500	100	14,000	0	18,100
2009	0	0	6,000	100	12,000	0	18,100
2010	0	0	6,000	100	12,000	0	18,100
2011	0	0	6,000	100	12,000	0	18,100
2012	0	0	8,000	100	15,000	0	23,100
2013	0	0	8,000	100	15,000	0	23,100

Source: FAA Form 5010 and Airport Management Records, FAA TAFs  
Prepared: September 2014



# Based Aircraft

Year	Single Engine Piston	Single Engine Turbine	Multiengine Piston	Multiengine Turbine	Rotor	Total
2004	42	0	0	0	0	42
2005	43	0	0	0	0	43
2006	43	0	0	0	0	43
2007	43	0	0	0	0	43
2008	40	0	0	0	0	40
2009	40	0	0	0	0	40
2010	31	0	0	0	0	31
2011	31	0	0	0	0	31
2012	31	0	0	0	0	31
2013	28	0	3	0	0	31
2014	48	1	2	1	1	53

Source: FAA Form 5010, Airport Management Records, [www.bentonvilleair.com](http://www.bentonvilleair.com), 2014 data from Airport Records  
 Prepared: September 2014



# 2003 Plan Recommendations

- Construct RSA for Runway 18
- Security fencing NW of lake
- Land acquisition
- Construct west side connector taxiway
- T-hangars and corporate hangars
- EA for runway extension
- Runway widening/extension
  - 4553 x 75

# 2003 Plan Recommendations (continued)

- Install MIRL, PAPIs, REILs
- Construct west side apron, connector taxiway, GA terminal, parallel taxiway, fuel farm

# Questions for 2014 MP

- What are significant changes since 2003?
- What are the current constraints?
- What future issues may affect the Airport?
- What are the current needs?
- Plans for proposed alternate grass operating area (AGOA) west of runway
  - 2,300' x 75'
- Other plans?

# Schedule

Number	Task Name	Months after Notice-to-Proceed												
		1	2	3	4	5	6	7	8	9	10	11	12	
1	Pre-planning and Project Initiation	■												
2	Coordination and Public Outreach		●				●				●		●	
3	Inventory	■	■											
4	Forecasts			■	■									
5	Demand/Capacity and Facility Requirements				■	■								
6	Environmental Considerations		■				■	■						
7	Airport Alternatives					■	■	■	■					
8	Airport Development Plans (MPU Concept)							■	■					
9	Financial Management and Development Program									■	■			
10	Airport Layout Plans								■	■	■	■		
11	Final Reports and Approvals												■	

Legend	
●	Coordination Meeting and/or Public Workshop
■	Task Work Underway



# Next Steps

- Forecasts
- Demand/Capacity Analysis
- Environmental Overview
- Alternatives



# Contacts

- **Greg Shipley, P.E.**

- [Gshipley@morrisonshipley.com](mailto:Gshipley@morrisonshipley.com)
- 479-452-1933



- **Pam Keidel-Adams**

- [Pam.Keidel-Adams@kimley-horn.com](mailto:Pam.Keidel-Adams@kimley-horn.com)
- 602-678-3422

**Kimley»»Horn**

