

*The City of Bentonville is strongly encouraging drivers to park vehicles in designated parking areas near the soccer fields (map attached).*

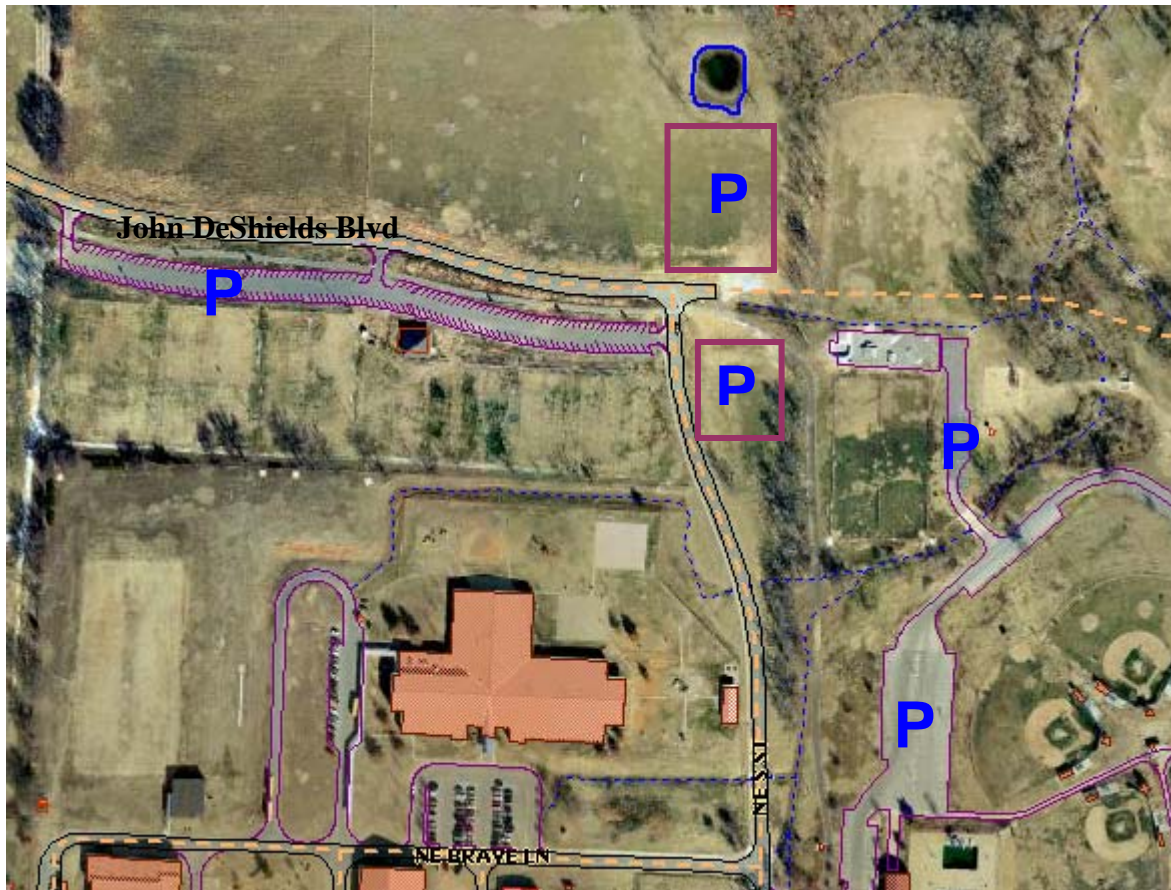
***Please do not use the trail on John DeShields Boulevard as a street.*** *The trail was designed for walkers, runners, and bicyclists. It cannot support the weight of vehicles. Continued use of the trail in this manner will result in costly damages. The trail needs to be a safe path of travel for the trail user – free of motorized vehicles.*

***Please do not park on the grass abutting the curb near John DeShields Blvd.*** *This creates a safety hazard by reducing the visibility of pedestrians crossing the road. We do not want to have a child dart out from between two parked cars in front of an on-coming vehicle.*

*The trails, fields and parks are for public use. Please be a good steward of the park and trail system and help us keep this a safe and well maintained facility. Your compliance with these rules will ensure the longevity of the trail, the safety of the trail users, and the safety of everyone using the park facilities.*

***Please see map below for designated parking areas.***

# Parking at Memorial Park



**P** = Public Parking Areas