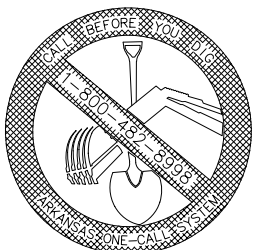






501 SE 3rd Street  
Bentonville, AR 72712  
Ph: (479) 271-3140  
www.bentonvillear.com

# SAN. SEWER DETAILS



REVISIONS:  
Adopted by City Council 1/14/2003  
Ordinance Number: 2003-18

Changes Proposed by Water Dept.  
4/10/2007  
10/04/2007  
04/16/2008

Changes Proposed by Health Dept.  
5/9/2007

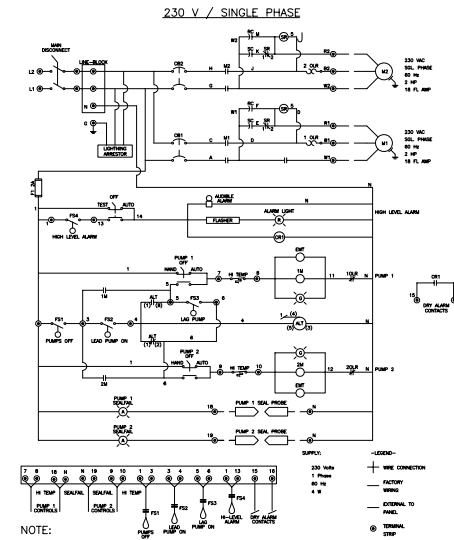
NOTES:

DRAWN BY: CAO DATE: 10/04/2007

APPROVED BY: XXX DATE: XX/XX/XXXX

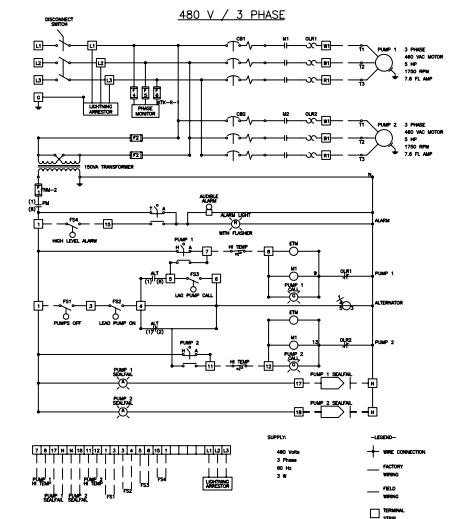
SHEET NUMBER: 2 OF 2

## DUPLEX PUMP CONTROL PANEL



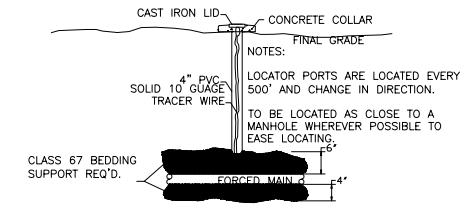
NOTE:  
BENTONVILLE WASTEWATER DEPARTMENT  
LIFT STATION DETAILS ARE NOT TO  
BE USED AS CONSTRUCTION PLANS

## DUPLEX PUMP CONTROL PANEL

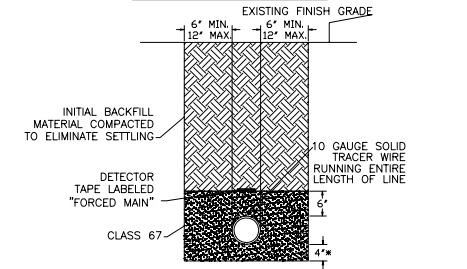


NOTE:  
BENTONVILLE WASTEWATER DEPARTMENT  
LIFT STATION DETAILS ARE NOT TO  
BE USED AS CONSTRUCTION PLANS

## TRACER WIRE PORT

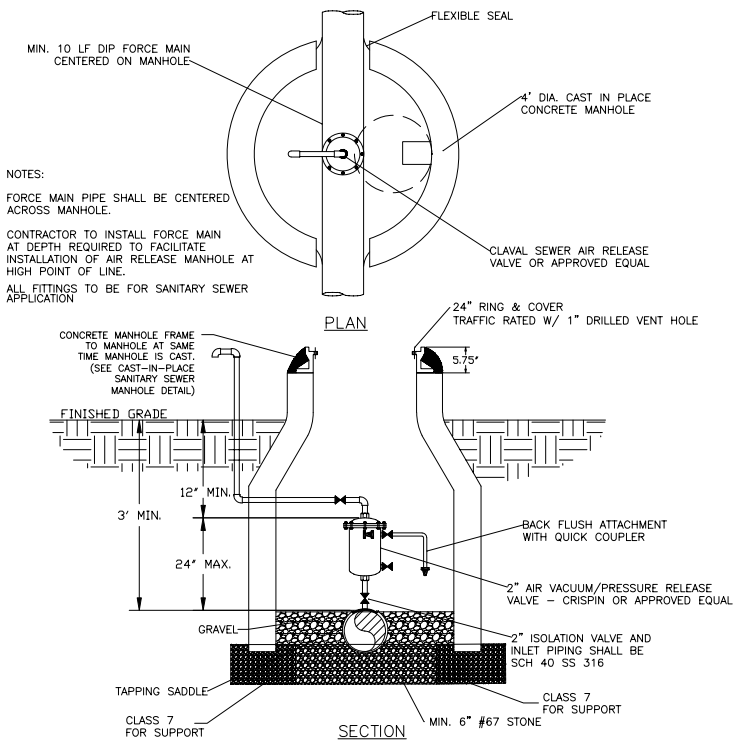


## TYPICAL BEDDING DETAIL FOR FORCED MAIN



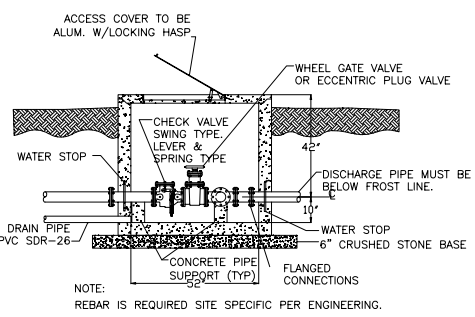
\* IF IN ROCK 6" MIN. CLASS #67 STONE REQUIRED.

## AIR VACUUM/RELEASE MANHOLE FOR FORCE MAIN



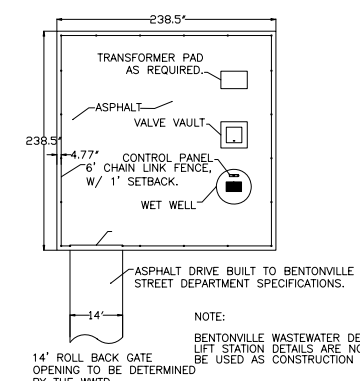
NOTES:  
FORCE MAIN PIPE SHALL BE CENTERED  
ACROSS MANHOLE.  
CONTRACTOR TO INSTALL FORCE MAIN  
AT DEPTH REQUIRED TO FACILITATE  
INSTALLATION OF AIR RELEASE MANHOLE AT  
HIGH POINT OF LINE.  
ALL FITTINGS TO BE FOR SANITARY SEWER  
APPLICATION

## LIFT STATION VALVE VAULT DETAIL

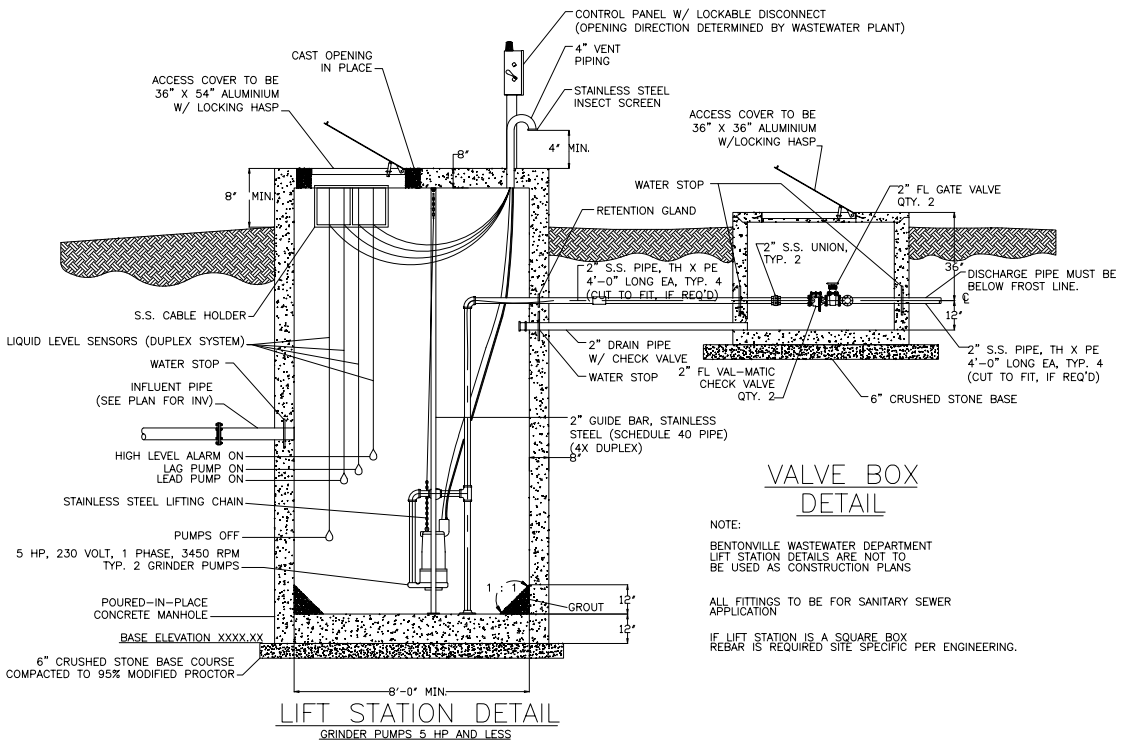


NOTE:  
REBAR IS REQUIRED SITE SPECIFIC PER ENGINEERING.

## LIFT STATION SITE DETAIL



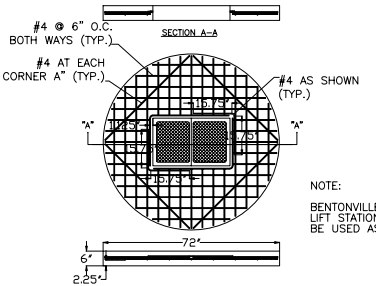
NOTE:  
BENTONVILLE WASTEWATER DEPARTMENT  
LIFT STATION DETAILS ARE NOT TO  
BE USED AS CONSTRUCTION PLANS



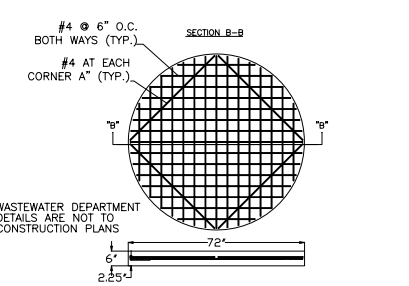
## VALVE BOX DETAIL

NOTE:  
BENTONVILLE WASTEWATER DEPARTMENT  
LIFT STATION DETAILS ARE NOT TO  
BE USED AS CONSTRUCTION PLANS

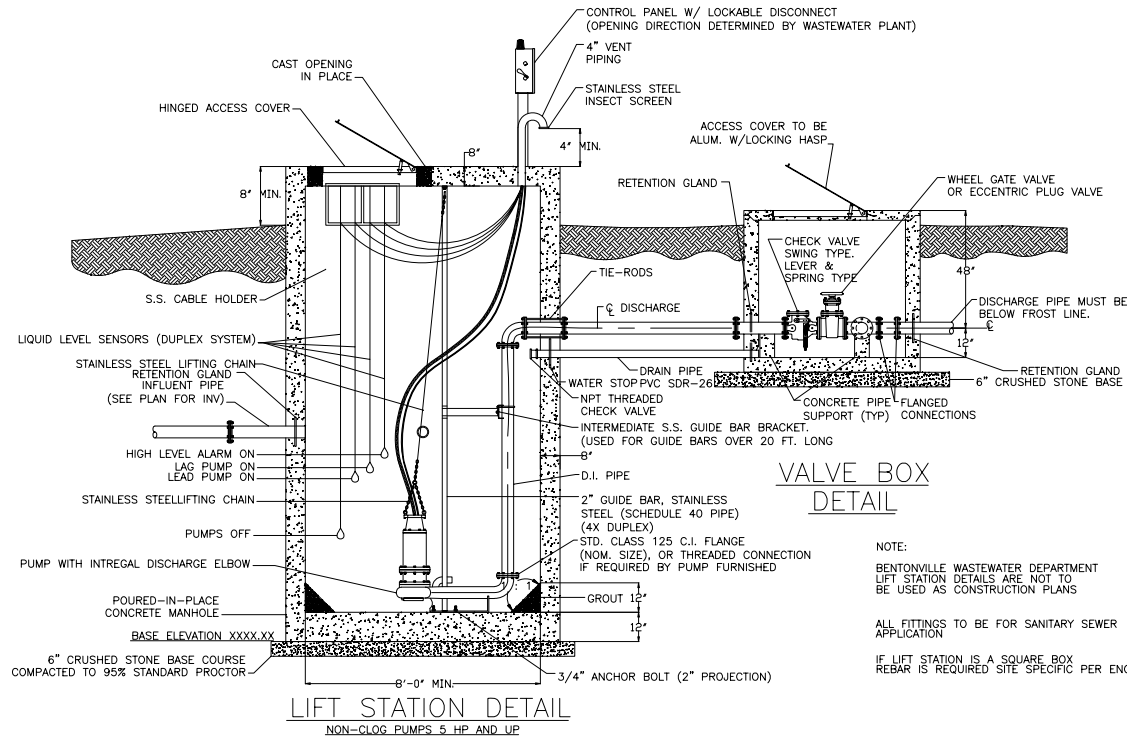
## WET WELL AND VALVE VAULT TOP SLAB REINFORCEMENT DETAIL



## WET WELL AND VALVE VAULT BOTTOM SLAB REINFORCEMENT DETAIL



NOTE:  
BENTONVILLE WASTEWATER DEPARTMENT  
LIFT STATION DETAILS ARE NOT TO  
BE USED AS CONSTRUCTION PLANS



## VALVE BOX DETAIL

NOTE:  
BENTONVILLE WASTEWATER DEPARTMENT  
LIFT STATION DETAILS ARE NOT TO  
BE USED AS CONSTRUCTION PLANS

## LIFT STATION DETAIL NON-CLOG PUMPS 5 HP AND UP